

VFINITY

COMPENSATION AT ITS FINEST



VFINITY®

WELCOME TO VFINITY.

VFINITY CAN PUT THE STYLE BACK IN YOUR LIFE BY GIVING YOU THE **INCREDIBLE OPPORTUNITY** TO GENERATE AMAZING FINANCIAL REWARDS.

We call this the vlifeSTYLE and it is quickly becoming a “better way” for many who are making the decision to become a Vfinity Lifestyle Consultant! **THE REWARDS ARE MORE THAN FINANCIAL** and can make a huge difference in your life and your family’s life!

YOUR success will not be predicated by your level of education, your age or your gender but will be about your desire and your willingness to plug into a **PROVEN PLAN DESIGNED FOR YOUR SUCCESS!**

OUR PLAN IS SIMPLE; provide highly effective products that produce great experiences for our Customers and Consultants. This is where we put the LIFE back into Lifestyle!

IT’S AS EASY AS 1-2-3...

- 1** - Use the Vfinity products.
- 2** - Feel the benefits.
- 3** - Share your Vfinity story with others!

GREAT EXPERIENCES MAKE IT FUN TO SHARE the Vfinity products. Happy customers create a Lucrative business model. A lucrative business model that rewards our Lifestyle Associates is what we refer to as **“COMPENSATION AT ITS FINEST!”**



HOW TO START

BEGIN

BECOME A VFINITY LIFESTYLE CONSULTANT

Open your account and select Your Fast Start Pak.*\$25 Vfinity Welcome Kit fee is waived with the purchase of a Fast Start Pak.

BENEFITS

- Consultants enjoy the ability to purchase all products at wholesale (or below) prices!
- Refer new customers who can purchase from your Personal Vfinity website or directly from you.
- Participate in the Vfinity Compensation Plan to earn commissions, Loyalty Reward Points and free product.

BASICS

- 1** - **SHARE** Your Vfinity Story and begin enrolling new Customers/Consultants
- 2** - **ENROLL** 2 Qualified Lifestyle Consultants to reach Director Status and maximize earning potential
- 3** - **TEACH** others to do the same!

*Personal Product purchase not required to earn in the Vfinity Compensation Plan. Qualifying volume can be accrued with personally enrolled customer purchases.



5 WAYS TO EARN

1. RETAIL & PREFERRED CUSTOMER PROFIT (PAID WEEKLY)

RETAIL & PC PROFIT CAN BE EARNED IN 2 WAYS:

- 1 - Paid directly to you from Vfinity when Retail Customers order from your Personal Vfinity website.

RETAIL CUSTOMERS: Earn 20-25% Commissions on Retail Customer Purchases
Ex: V3 Retail \$70 - V3 Wholesale \$55 = **\$15 Retail Profit**

PREFERRED CUSTOMERS: Earn 20% Commissions on the TOTAL DOLLAR VALUE of ALL Preferred Customer Orders!
Ex. You have 20 individual PC's ordering 1 bottle of V3 Original @ \$55/month. Receive 20 x (20% x \$55) = **\$220 in monthly retail profit**

- 2 - Sell directly from your personal product inventory. You determine your retail price and your retail profit.

Personal Qualification Requirements: You must be enrolled as an Vfinity Consultant in good standing.

2. FAST START BONUS (PAID WEEKLY)

Earn 15% Commission on every Personally Enrolled Consultant's Fast Start Pak.

Fast Start Bonus of \$40.5 - \$129 on Pak choices below (paid weekly). This Bonus is calculated by multiplying the Pak's FSV (Fast Start Volume) by 15%.

Personal Qualification Requirements: Active Consultant with 1 time ONLY Personal Purchase of a Fast Start Pak (220PV).
Ongoing Qualification: QC - 50PV Monthly Director or above - 220PV.

FAST START PAKS*

PAK NAME	STARTER KIT (\$25 VALUE)	PAK CONTENTS	RETAIL VALUE	PRICE/FSV	FAST START BONUS
PREMIERE PAK	YES	<ul style="list-style-type: none"> (6) V1 SMOOTHIE™ (6) V2 GREENS™ (6) V3 ORIGINAL™ (6) VBIOTIC™ (4) KETOPERK™ 	\$1,585	\$860/ 860FSV	\$129 (860x15%)
SUCCESS PAK	YES	<ul style="list-style-type: none"> (4) V1 SMOOTHIE™ (2) V2 GREENS™ (2) V3 ORIGINAL™ (2) VBIOTIC™ (4) KETOPERK™ 	\$845	\$430/ 430FSV	\$64.50 (430x15%)
ACCESS PAK	YES	<ul style="list-style-type: none"> (2) V1 SMOOTHIE™ (1) V2 GREENS™ (1) V3 ORIGINAL™ (1) VBIOTIC™ (2) KETOPERK™ 	\$440	\$270/ 270FSV	\$40.50 (270x15%)
YES I CAN! PAK	YES	<ul style="list-style-type: none"> (2) V1 SMOOTHIE™ (1) V2 GREENS™ (1) V3 ORIGINAL™ (1) VBIOTIC™ 	\$334	\$200/ 200FSV	\$30 (200x15%)

*All paks contain additional marketing materials. For a complete list of all Vfinity Fast Start Paks and descriptions please refer to the Fast Start Pak Flyer in your Back Office or consult the Lifestyle Consultant who provided you with this information.



5 WAYS TO EARN

3. UNI-LEVEL BONUS

THE UNI-LEVEL BONUS ALLOWS YOU TO EARN ON THE EFFORTS OF 5 LEVELS OF YOUR TEAM.

When you enroll your first Qualified Consultant (QC), you will earn 1 level of 15% UV. You will earn more levels (up to 5) as shown below. You must maintain your QC's each month to receive maximum Uni-level payout. **Compression** ensures that all percentages are paid out to Consultants who maintain qualification at each level or to the Qualified Consultants upline.

Personal Qualification Requirements: You must be a Qualified Consultant with a monthly requirement of 50PV and the required personal sponsorship of 1-4 Qualified Consultants as Width determines levels of pay.

Ongoing Qualification: Maintain 4 Active (50PV) Personally enrolled QC's and 220PV. If you fall below the required QC's you will be compensated at the level you are qualified. All unpaid percentages will roll up to the first qualified upline consultant due to Compression!

UNI-LEVEL TEAM BONUS

FIRST 50 MONTHLY (UV) OF ALL GROUP VOLUME				
PERSONALLY ENROLLED	1 QC	2 QC	3 QC	4 QC
LEVEL 1	15%	15%	15%	15%
LEVEL 2		10%	10%	10%
LEVEL 3			10%	10%
LEVEL 4				5%
LEVEL 5				5%

↑ COMPRESSION



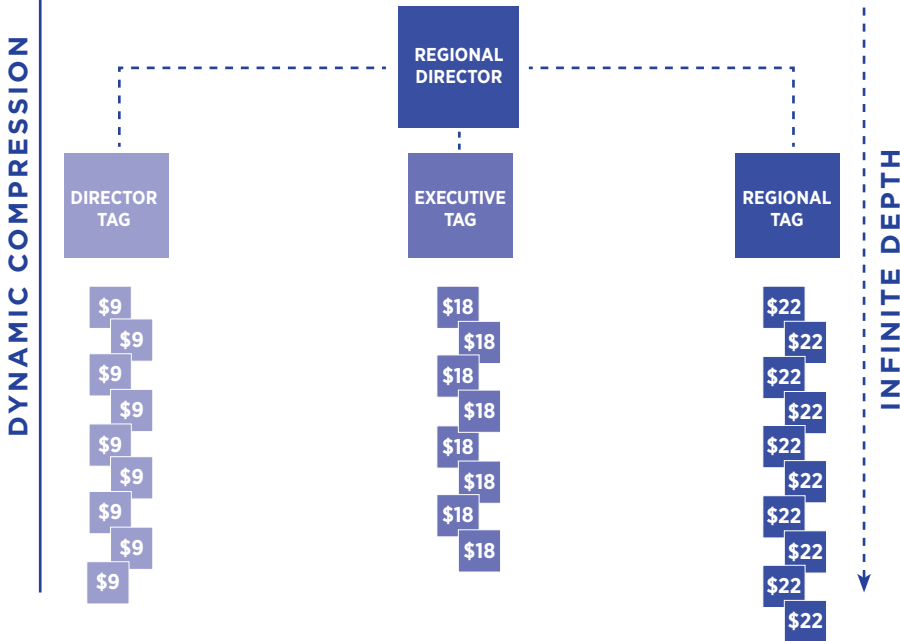
5 WAYS TO EARN

4. TAGGED TEAM BONUS

As you rise up to each new rank in Vfinity you will have a segment of your team that is "TAGGED" to that particular rank. Each Rank up will increase the percentage you earn on your new "Tagged" team. These percentages are paid on the Fast Start Volume resulting from New Consultants purchasing Fast Start Paks in each "tagged" team.

DIRECTOR	EXECUTIVE DIRECTOR	REGIONAL DIRECTOR	NATIONAL DIRECTOR
9%	+ 9% (18%)	+ 4% (22%)	+ 3% (25%)

Example: This illustration will show the possible earnings of a Qualified Regional Director from their tagged teams and this example will be based on the purchase of the \$430 Pak. This generates a FSV of \$430. (we will use 100 for simplicity)



The "TAG" program will search down infinite depth to pay applicable percentages until it reaches a consultant who has ranked up to Director (or above) They will then earn their "Tagged" Team Bonus. For instance, in your Regional Tag you earn 22% until you reach a Qualified Director, they will then earn 9% of their Director Team but you will earn the difference of 13%.

Dynamic Compression ensures that all 4 Tagged Bonuses will be paid to Tag qualified Consultants, if a Consultant does not Qualify, the program searches upline for the first Appropriate Tag Qualified Consultant.



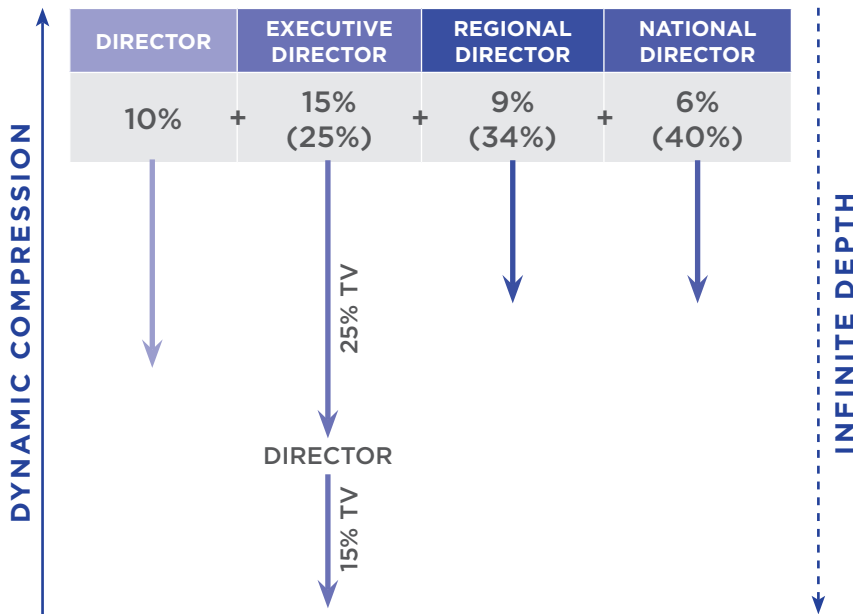
5 WAYS TO EARN

5. TEAM COMMISSION

Team commissions allow you to earn on all Group Volume (GV) less the UV which equals Team Volume (TV).

The percentage you earn is determined by your "Tagged" Team for each Qualified Rank Position exactly as in the Tagged Team Bonus.

Group Volume (GV) is all volume that is not linked to a Fast Start Pak and includes AutoShip, customer orders, and any Consultant order after their initial Fast Start Pak. The first 50UV each month is dedicated to the Uni-Level and the remaining is compensated through the Team Commission.



Similar to the "TAG", the program will search down infinite depth to pay applicable percentages until it reaches a consultant who has ranked up to Director (or above) They will then earn their Team Bonus. For instance, if you are a Qualified Executive you earn 25% down your Executive teams until you reach a Qualified Director, they will then earn 10% of their Director Team and you will earn the difference of 15%. Again, Dynamic Compression ensures that the entire 40% will be paid on Team Volume (TV).



GLOSSARY

Active Lifestyle Consultant – a minimum of 50PV monthly is required to maintain Active Status as a consultant. If you have not reached the rank of Director, then you can earn Retail, Fast Start Bonus and Uni-Level. A director and above is required to have 220PV monthly to maintain qualification for commissions. If you do not meet your 220PV, you will be paid as a QC with at least 50PV.

Autoship – A monthly automatic order for the convenience of a customer or consultant. Vfinity does not require Consultants to be on autoship to receive commission. NOTE: Customers can request monthly, bimonthly, semiannual or annual autoship.

Back Office – The online portal provided to consultants by Vfinity to allow for access to information, tools and business data.

Consultant – enrolled with \$25 enrollment fee. May earn retail commission with personally enrolled customers.

Dynamic Compression – Assures that all published percentages in the Uni-Level, the Tagged Team bonuses and the Team Commissions will be paid to a Qualified consultant or the first qualified consultant(s) in the upline.

Fast Start Bonus – The bonus paid to a Lifestyle Consultant when they directly enroll a new lifestyle consultant with a Fast Start Pak.

Fast Start Bonus Qualified – A qualified consultant who has purchased a Fast Start Pak within 30 days of enrollment.

Fast Start Volume (FSV) – The volume that is credited to the Fast Start Paks and Tagged Team Bonus.

Infinite Depth – The Tagged Team Bonus and Team Commissions are not based on “levels” but allow for infinite depth when calculating Bonuses earned. There will be a break when a Qualified Director or above is found, they will then earn their Tagged Team Bonus and Team Commission on their specific Tagged Team and you will earn the difference if you qualified at a Higher rank.

Group Volume (GV) – all volume that is not resulting from the purchase of a Fast Start Pak. This includes auto ships, customer orders and any product orders after the initial purchase of Fast Start Pak.

Ongoing Qualification – what is required to maintain income rank status on a monthly basis.

Paid-As Rank – The rank that a Consultant's PV and group structure qualify them for on any given day within a commission month. Ongoing qualification is listed for all Bonuses.

Personal Volume (PV) – Volume from personal purchases and the purchases of personally enrolled customers.

Personal Qualification Requirement – what is required to reach an income rank and will include your PV and team structure if stated.

Personally Enrolled – When you refer someone to Vfinity who opens an account as either a Consultant or a Preferred Customer. A consultant will be placed on Level 1 of your organization while a Preferred customer will be considered Level 0 and all Preferred Customer order volume will count at Enroller's PV.



GLOSSARY

Preferred Customer - A preferred customer can take advantage of discounted product prices by enrolling as a Preferred Customer on autoship. They must remain on autoship to receive lower prices. A preferred customer generates PV for their enroller.

Qualified Lifestyle Consultant (QC) - Consultant who has either purchased Fast Start Pak (220PV) within first 30 days of enrollment or accrued 220 PV in a calendar month. QC may earn Retail commission, Fast Start Bonus and Uni-level Bonuses. A QC has the ability to Rank up for participation in additional ways to Earn.

Lifetime Rank - The highest rank in which a Consultant has qualified for in the Vfinity compensation plan. You will always maintain this rank title but your commissions for any month will be based on your "Paid-As" rank qualification.

Sales Volume (SV) - the volume points assigned to each Vfinity product for qualification and commission purposes. For example, V2 Skinny Greens™ is priced at \$45 wholesale and is assigned a SV of 45 for qualification and commission purposes.

Tagged Team - At enrollment each consultant is tagged into 4 different upline Tag ranks; Director, Executive Director, Regional Director and National Director. Each Rank represents a different set of earnings in the Tagged Team Bonus and the Team Commissions. As a QC rises to Director and above, they will have different groups of people in their downline team that are "tagged" to each rank achieved.

Team Volume (TV) - all monthly NON-FSV less the Uni-level Volume (UV).

Uni-level Volume (UV) - the first 50 PV of each consultant's NON-FSV monthly is dedicated to the Uni-Level.

